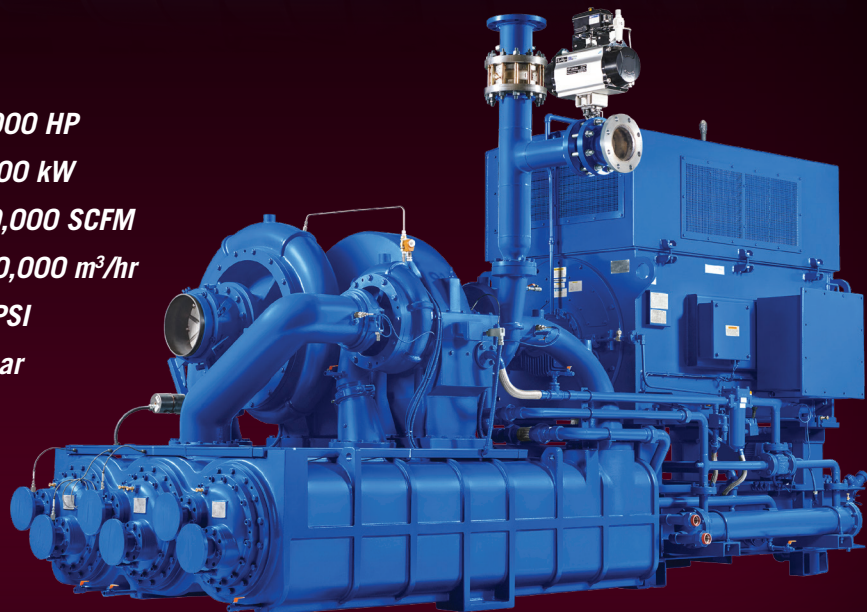


GC Series Centrifugal Compressor



Power: 200 HP to 13,000 HP
140 kW to 10,000 kW
Flow: 1,250 cfm to 350,000 SCFM
2,100 m³/h to 600,000 m³/hr
Pressure: 30 to 1,100 PSI
2 bar to 80 bar
Air, Gas, Pressure
API 614/617/672



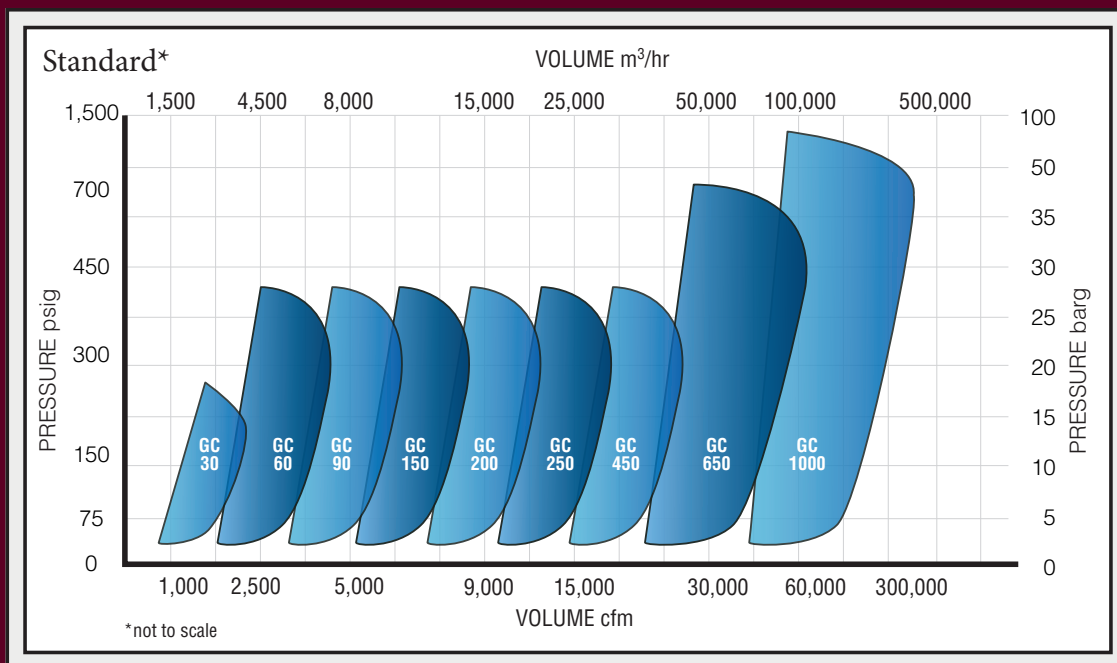
Your ONE Solution for Blower & Compressor Systems

GC Series Centrifugal Compressor

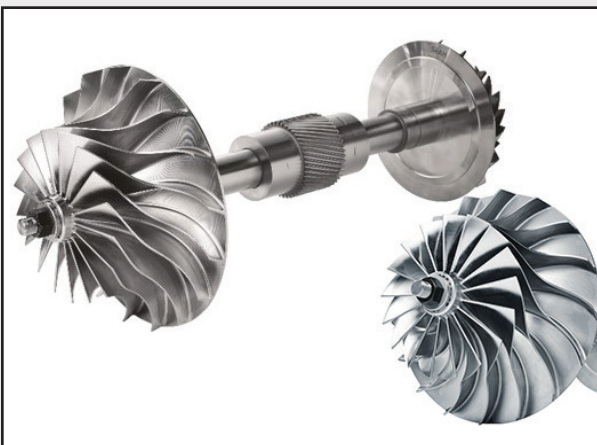
Lone Star GC (CHORUS) Series Integrally Geared Compressors are designed and manufactured with the highest quality standards. With 1,100+ installations we have the experience and proven reliability you can count on. These units are completely supported from our Houston, Texas manufacturing facility, with field and full factory service capabilities, repair and overhaul, custom packaging and mechanical/performance testing.

Product Features

- Standard and Custom Engineered Compressors and Controls.
- Energy Efficient – State of the Art Aerodynamic and Minimal Mechanical Loss Design.
- Tilt Pad Force Lubricated Bearings for Proven 30+ year life.
- Variable Inlet, Variable Discharge Guide Vanes and Speed Control.
- Impellers 5-Axis Machined 17-4PH Stainless Steel, Titanium, or Inconel
- Horizontally Split Gearbox Case for Easy Maintenance.
- Quality – API 617, API 672, API 614
- Oil Free Process Air or Gas

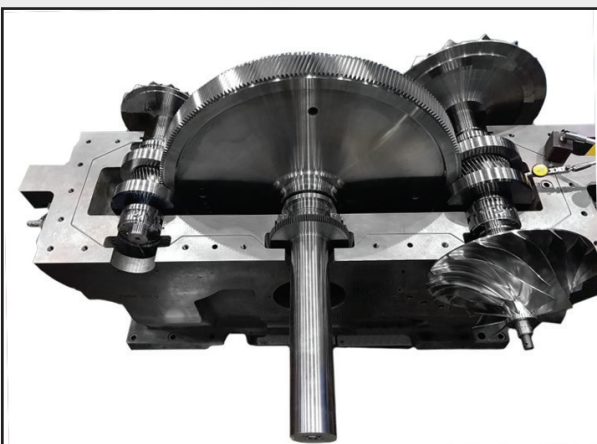


*Ask about custom engineering to any flow and pressures beyond our standard units.



High efficiency & optimal design for the best performance

- 5-axis milled backward leaning blade
- Wide operation range with maximum turndown
- Optimized aero-matching through whole flow path



High performance, reliable, and easy maintenance gear system

- Low noise & high precision helical gear
- AGMA 6011/API standard design
- Compliant to DIN3961 Q4/Q5 (AGMA2000 13/12)
- Individually replaceable pinion and bull gear
- Thrust collar design



Maximum bearing load capacity & minimum mechanical loss design

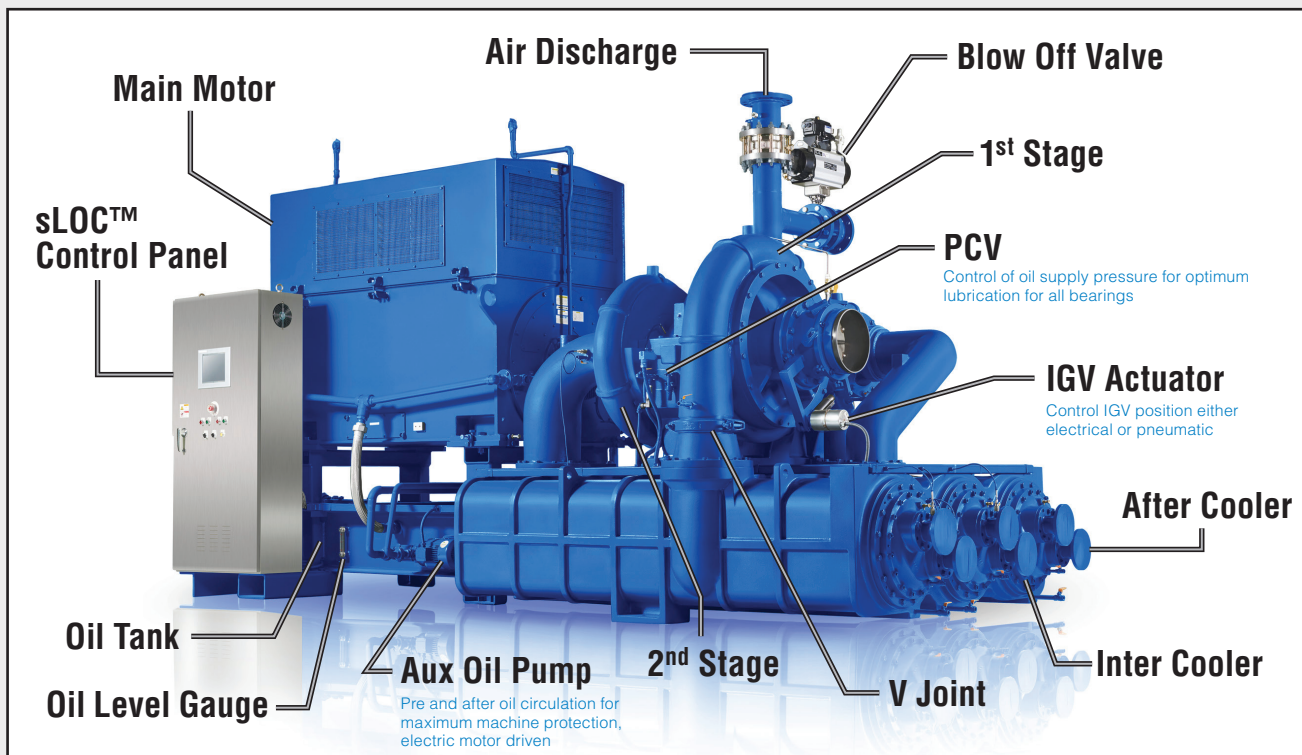
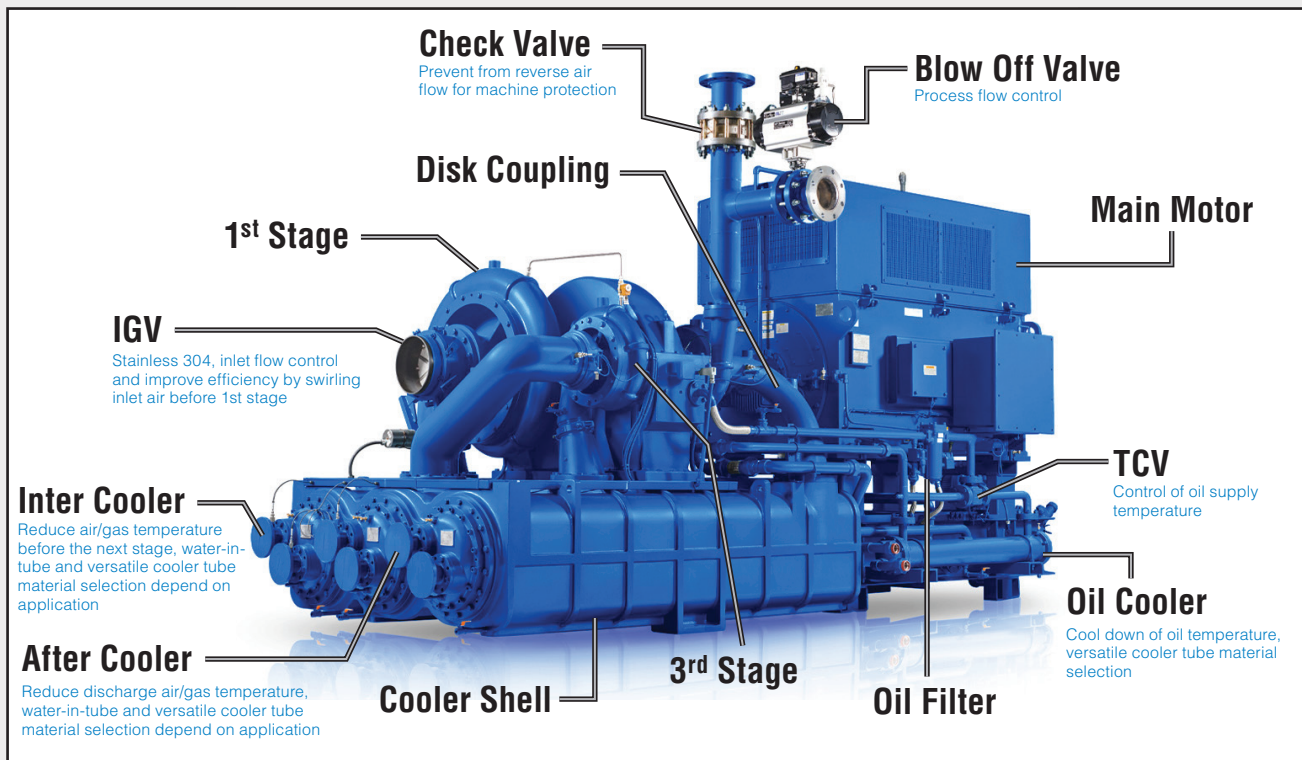
- Tilting pad pinion journal bearing
- Sleeve journal and taper land thrust bull gear bearing
- Horizontally split design for easy maintenance
- Designed for maximum static and dynamic load capacity

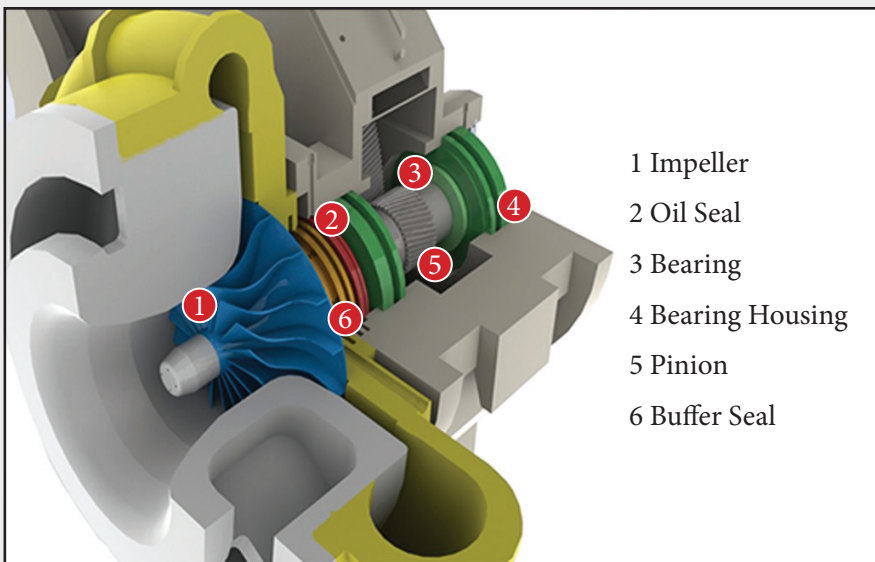


sLOC™ Control Panel

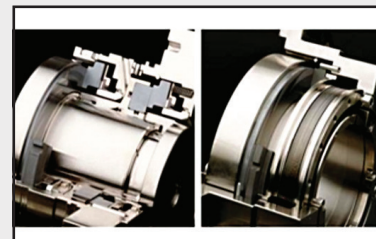
- Operation status display for control, monitoring, trending and protection
- sLINK™ Remote Monitoring Optional
- Mass Flow Control for wider turndown
- Non-propriety open architecture with options for Allen Bradley, Siemens, or other as required
- **10 Year Warranty** on all components with standard control offering

GC Packaged System



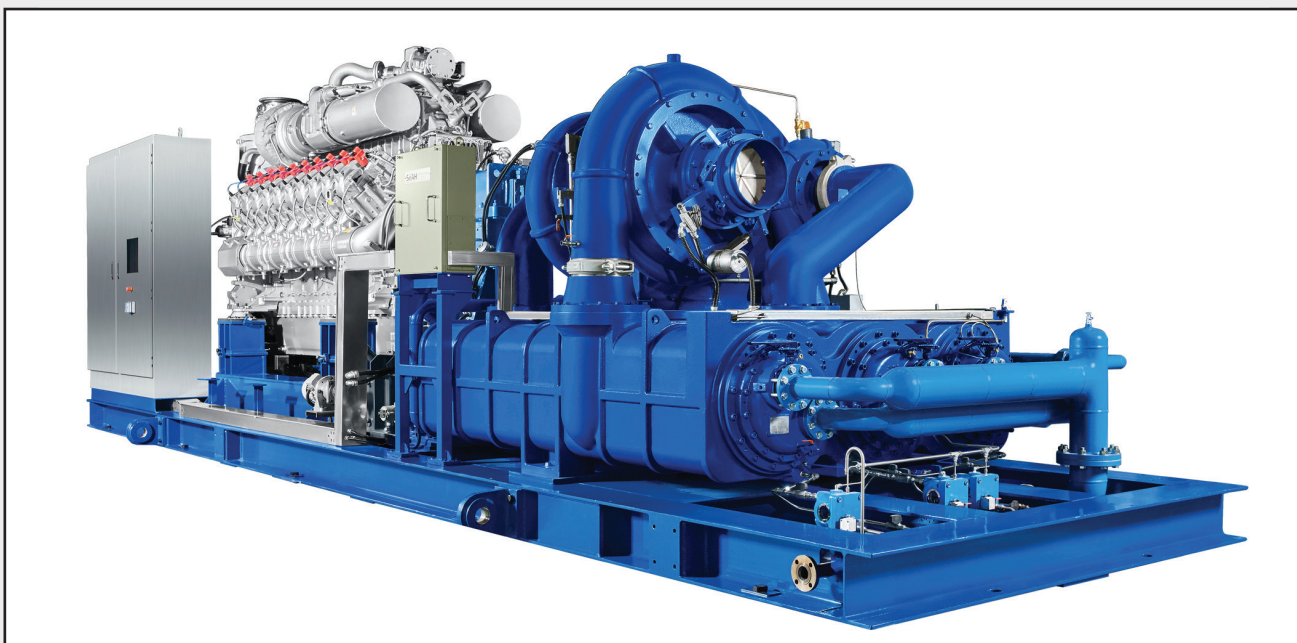


Carbon Float Ring



Buffered Labyrinth

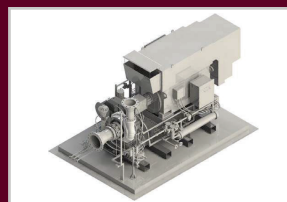
Process Compressors are made to order for any specification or area classification. Air, Nitrogen, Natural Gas, Fuel Gas, Mechanical Vapor Recompression (Steam), CO₂, or other gasses require specific materials and design. Our engineered solutions can meet the most demanding specifications from API 617, API 672, API 614 and beyond



CO₂ Compressor



Mechanical Vapor
Recompressor



Booster Compressor



Fuel Gas Compressor

LONE STAR GLOBAL NETWORK

We have locations around the world to serve you



**We manufacture the most advanced line
of centrifugal blowers and compressors in the world.**

Please visit our website at www.lonestarblower.com or
call us today regarding your next application.

GC

Centrifugal Compressor



GB

Single Stage Geared



MC

Multistage Centrifugal



DT

High Speed Turbo



CS

Control Systems



AM

Aftermarket



BLOWER AND COMPRESSOR

8883 West Monroe Road
Houston, Texas 77061 USA

Tel: +1 832-532-3112

Fax: +1 832-532-3115

info@lonestarblower.com • www.LoneStarBlower.com

LSB-GC-MAY21