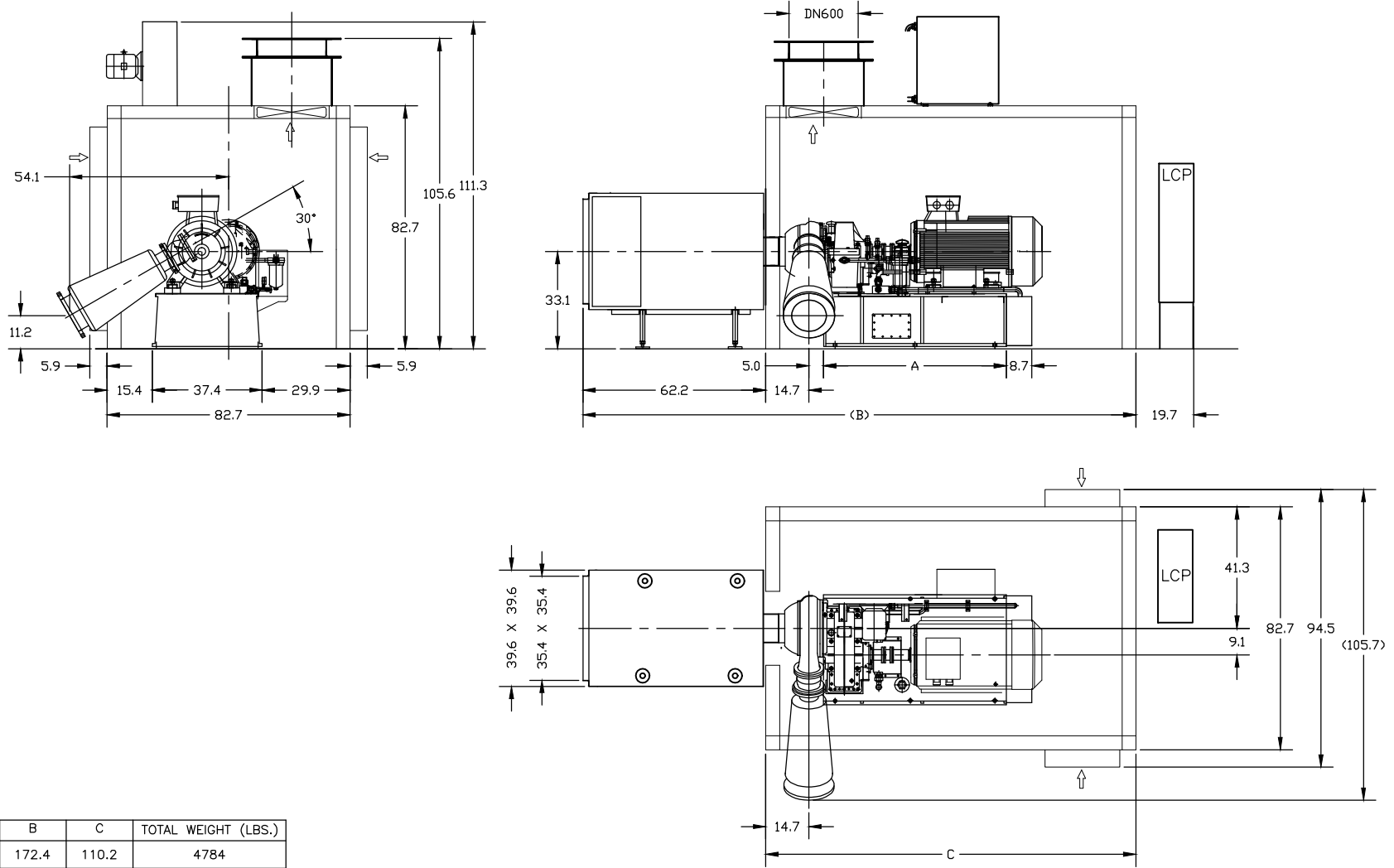


NOTES:

1. BLOWER OUTLET ANGLE ADJUSTABLE EVERY 15° RADIALLY
2. BLOWER INSTALLED BY EXPANSION BOLTS

REVISION HISTORY			
REV	DESCRIPTION	DATE	APPROVED



MOTOR	A	B	C	TOTAL WEIGHT (LBS.)
75kw	55.1	172.4	110.2	4784
90kw	55.1	172.4	110.2	4828
110kw	55.1	172.4	110.2	5203
132kw	62.2	188.2	126	5842
160kw	62.2	188.2	126	6096
185kw	62.2	188.2	126	6338
200kw	62.2	188.2	126	6360
220kw	66.9	192.1	129.9	7672
250kw	66.9	192.1	129.9	7782

PROPRIETARY NOTICE LONE STAR BLOWER PROPRIETARY RIGHTS ARE INCLUDED HEREIN. THIS INFORMATION MAY NOT BE COPIED, TRANSFERRED, OR DISCLOSED, EXCEPT AS AUTHORIZED BY LONE STAR BLOWER.	UNLESS OTHERWISE SPECIFIED INTERPRET GEOMETRIC DIMENSIONING & TOLERANCING PER ASME Y14.5M-1994	DRAWING IS FOR REFERENCE ONLY UNLESS SPECIFIED AS RELEASED.	
	DO NOT SCALE	APPROVALS DRAWN: BW 14-MAR-2015	
MODEL INFO UNSPECIFIED GEOMETRY MAY BE OBTAINED FROM THE DATABASE PROVIDED: (1) NAME & VERSION ARE IDENTICAL TO THAT SPECIFIED BELOW AND (2) STATE IS SPECIFIED AS "RELEASED"	DIMENSIONAL UNITS: INCHES THIRD ANGLE PROJECTION	CHECK	
MODEL FILE: GL2-WX-02		ENGINEER	
		MANUFACTURING	
		CONTROL	
APPROVED			

LONE STAR BLOWER

TITLE
GL2-WX-02
WITH SOUND ENCLOSURE

SIZE	CAGE CODE	DWG NUMBER	REV
A	-	GL2-WX-02	01

SCALE NTS SHEET 1 OF 1