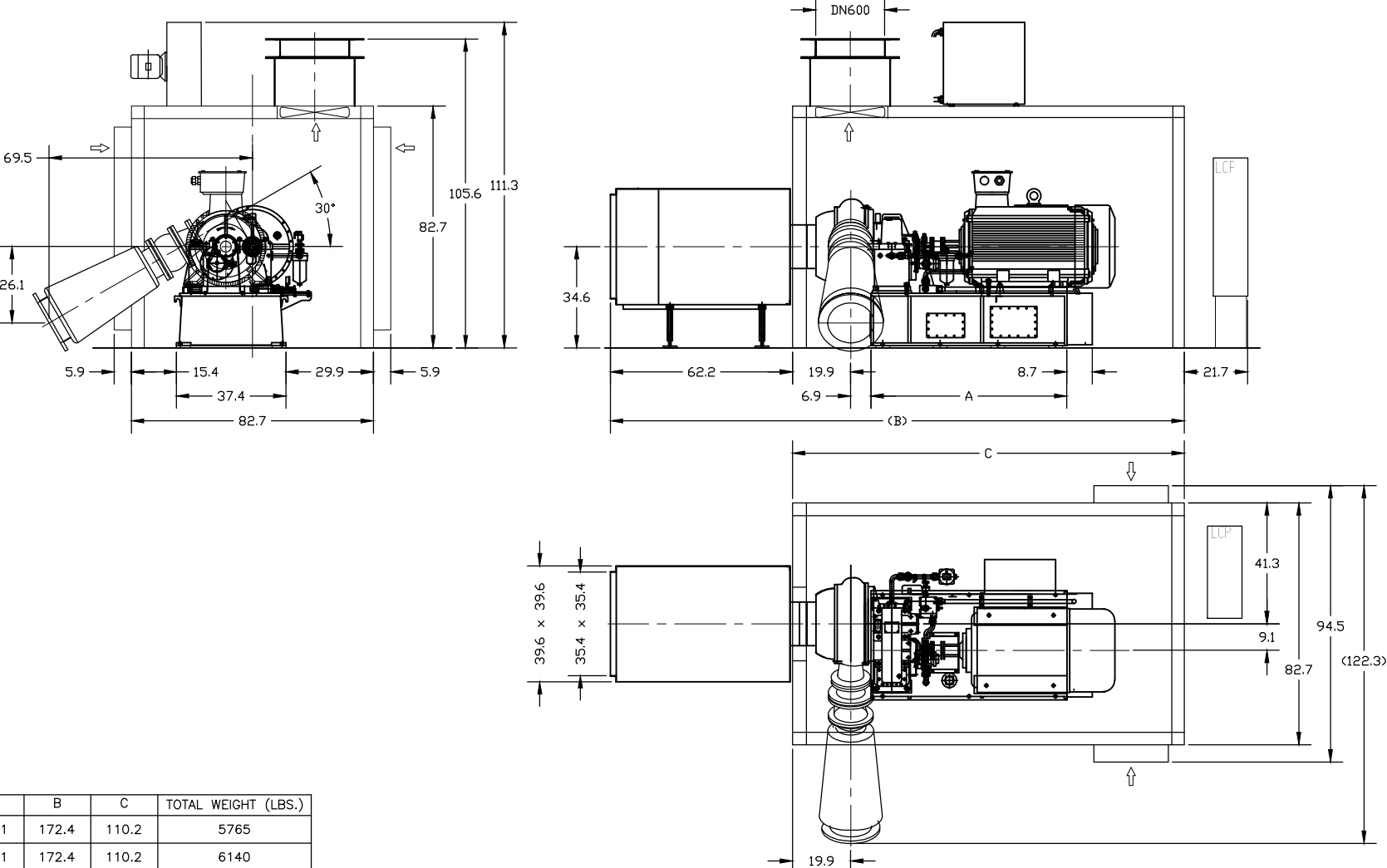


REVISION HISTORY			
REV	DESCRIPTION	DATE	APPROVED

NOTES:
 1. BLOWER OUTLET ANGLE ADJUSTABLE EVERY 15° RADIALLY
 2. BLOWER INSTALLED BY EXPANSION BOLTS



MOTOR	A	B	C	TOTAL WEIGHT (LBS.)
90kw	55.1	172.4	110.2	5765
110kw	55.1	172.4	110.2	6140
132kw	62.2	188.2	126	6614
160kw	62.2	188.2	126	6867
185kw	62.2	188.2	126	7110
200kw	62.2	188.2	126	7132
220kw	66.9	196.1	133.9	7959
250kw	66.9	196.1	133.9	8069
280kw	66.9	196.1	133.9	8466
315kw	66.9	196.1	133.9	8488

PROPRIETARY NOTICE LONE STAR BLOWER PROPRIETARY RIGHTS ARE INCLUDED HEREIN. THIS INFORMATION MAY NOT BE COPIED, TRANSFERRED, OR DISCLOSED, EXCEPT AS AUTHORIZED BY LONE STAR BLOWER.	UNLESS OTHERWISE SPECIFIED INTERPRET GEOMETRIC DIMENSIONING & TOLERANCING PER ASME Y14.5M-1994	DRAWING IS FOR REFERENCE ONLY UNLESS SPECIFIED AS RELEASED.		
	DO NOT SCALE	APPROVALS DRAWN: BW 14-MAR-2015 CHECK: ENGINEER: MANUFACTURING: CONTROL: APPROVED:		
MODEL INFO UNSPECIFIED GEOMETRY MAY BE OBTAINED FROM THE DATABASE PROVIDED: (1) NAME & VERSION ARE IDENTICAL TO THAT SPECIFIED BELOW AND (2) STATE IS SPECIFIED AS "RELEASED"	DIMENSIONAL UNITS: INCHES THIRD ANGLE PROJECTION			
MODEL FILE: GL5-WX-02	TITLE: GL5-WX-02 WITH SOUND ENCLOSURE			
SIZE: A CAGE CODE: - DWG NUMBER: GL5-WX-02		SCALE: NTS		REV: 01

LONE STAR BLOWER

TITLE: GL5-WX-02 WITH SOUND ENCLOSURE

SIZE: A	CAGE CODE: -	DWG NUMBER: GL5-WX-02	REV: 01
---------	--------------	-----------------------	---------

SHEET 1 OF 1