



### Model MAX50-C060/080

#### Standard Specifications

|                              |  |
|------------------------------|--|
| Gas .....                    | Air Only                                 |
| Flow Range.....              | 100% to 45% of Rated Flow*               |
| Maximum Case Pressure .....  | 35 PSIG / 2.4 bar                        |
| VFD (integral).....          | Vacon, KEB, Yaskawa                      |
| Stages.....                  | Single Stage                             |
| Power Driver Options.....    | Intregal Permanent Magnet Electric Motor |
| Cooling .....                | Self Cooled Air Cooled                   |
| Bearings .....               | NSTB+ Air Foil                           |
| Enclosure.....               | Standard                                 |
| Sound Level.....             | 75 dB @ 3 feet free field                |
| Filtration Rating (std)..... | 99% at 2 micron, or as required          |

#### Control Options

|                          |  |
|--------------------------|--|
| Control Methods .....    | Speed Control, Blow Off Control, Pressure, Flow                      |
| Local Controller.....    | sLOC™ Standard - Custom for Allen Bradley, Modicon, Siemens or Other |
| HMI.....                 | sLOC™ Standard or Custom HMI   |
| Remote Monitoring .....  | sLINK™ or Custom   |
| Control Set Points ..... | Pressure, Flow, Power, Custom Input                                  |

#### Standard Materials of Construction

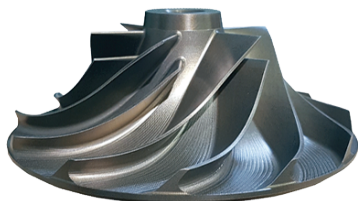
|                        |   |
|------------------------|---|
| Casing.....            | A356 Cast Aluminum                        |
| Volute .....           | A356 Cast Aluminum                        |
| Bearings .....         | Inconel with Teflon, Nano Silver Coatings |
| Impeller.....          | 5 Axis Machined anodized 7075 Aluminum    |
| Shaft .....            | Titanium alloy with Sm2C017 Magnets       |
| Blower Base Skid ..... | ASTM A36 Structural Steel                 |
| Isolation Pads.....    | Adjustable Feet with Mounting Anchor      |
| Finish.....            | Powder Coated Cabinet                     |

#### Optional Testing & Certifications

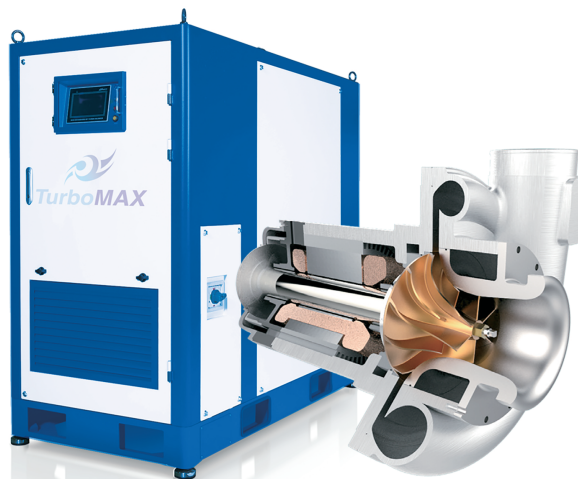
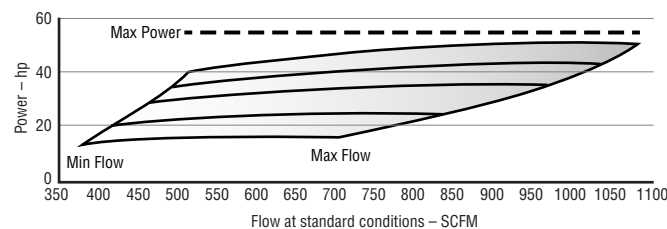
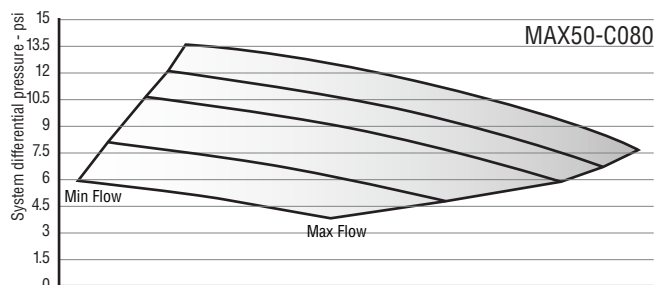
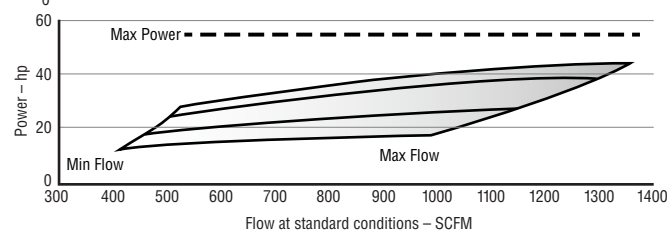
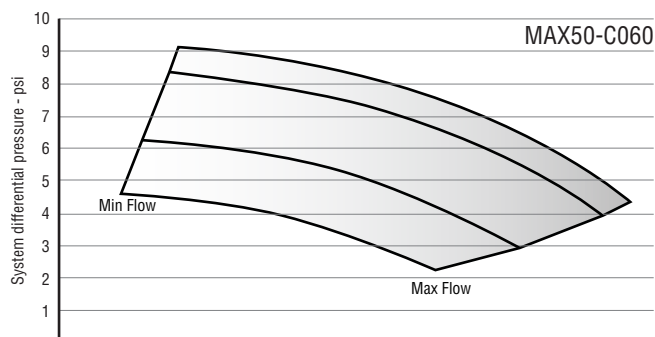
|                           |                                    |
|---------------------------|------------------------------------|
| Electrical.....           | UL 508A, UL 1450, CSA, CE, IEEE519 |
| Hazardous Location .....  | Not Classified                     |
| Balancing.....            | ISO 1940 - G2.5, ~4W/N API         |
| Noise Level.....          | OSHA 1910.95, ISO 2151:2004        |
| Performance Testing ..... | ASME PTC-10, PTC-13, ISO 5389      |

#### Standard Options

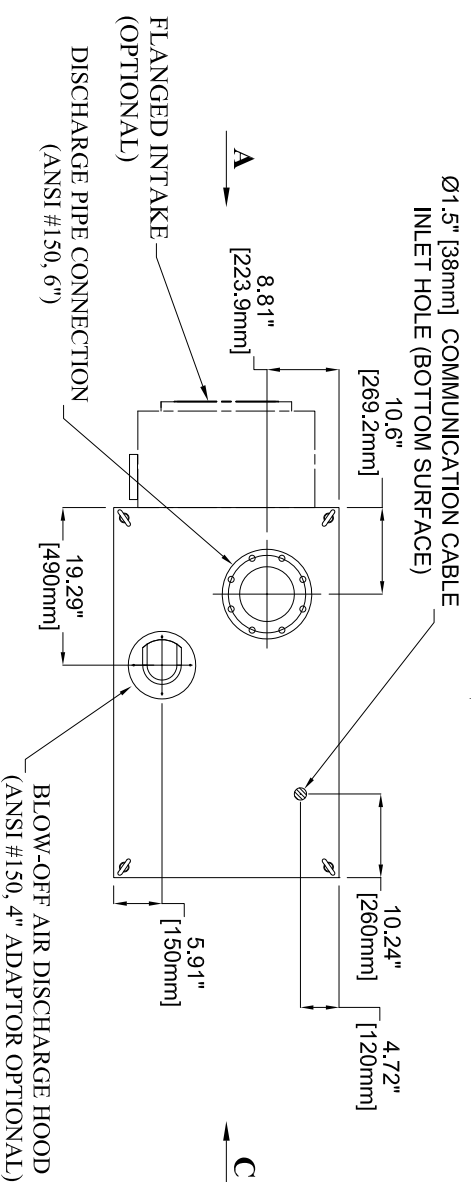
- High and Low Ambient Temperature
- Sperated Electrical and Mechanical Enclosure
- Flanged Intake
- Outdoor Enclosure
- Dual and Duplex Options
- Harmonic Filter



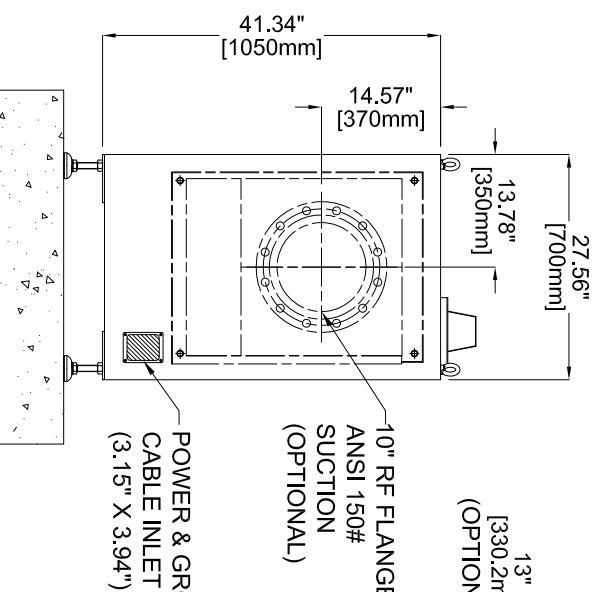
#### Service Air and Pressure



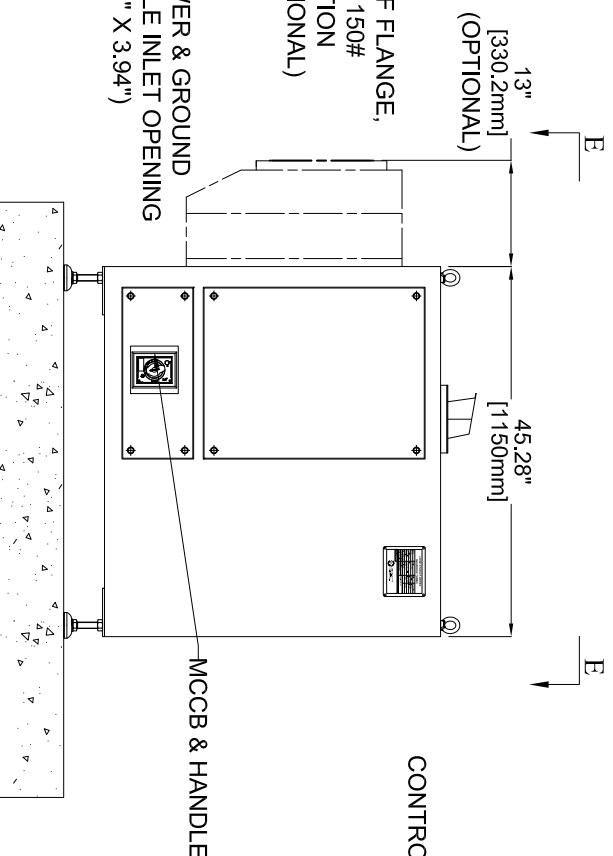
**VIEW "E-E"**  
(LOOKING DOWNWARD)



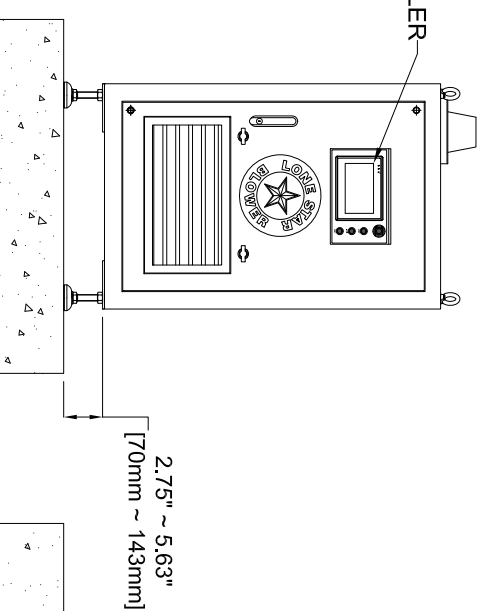
**VIEW "A"**  
(REAR SIDE)



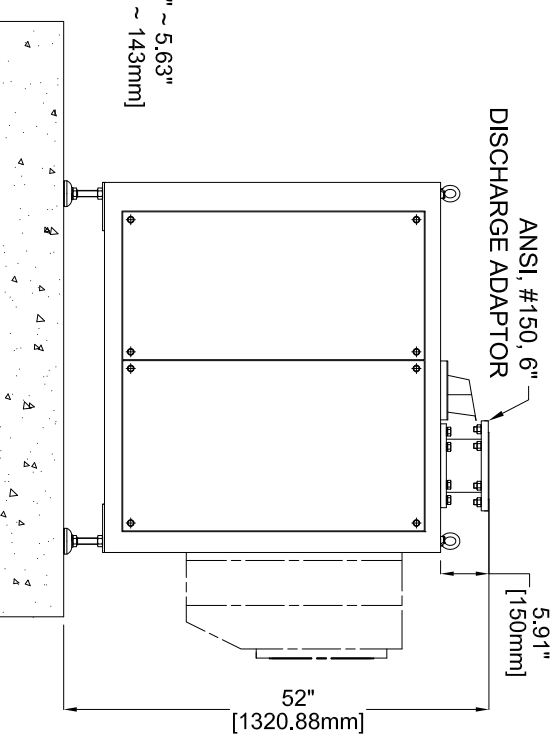
**VIEW "B"**  
(LEFT SIDE)



**VIEW "C"**  
(FRONT SIDE)



**VIEW "D"**  
(RIGHT SIDE)



ALL DIMENSIONS ARE SUBJECT TO CHANGE WITHOUT NOTICE.  
PLEASE CONSULT WITH LONE STAR PRIOR TO DESIGNING AROUND PARTICULAR EQUIPMENT.

| MODELS                              | WEIGHT           |
|-------------------------------------|------------------|
| MAX50-C060-C080-C100 LOUVER         | 840 LBS (380 KG) |
| MAX50-C060-C080-C100 FLANGED INTAKE | 940 LBS (425 KG) |

UNLESS OTHERWISE SPECIFIED  
DO NOT SCALE

LONE STAR BLOWER PROPRIETARY RIGHTS ARE INCLUDED HEREIN. THIS INFORMATION MAY NOT BE COPIED, TRANSFERRED, OR DISCLOSED, EXCEPT AS AUTHORIZED BY LONE STAR BLOWER.

DRAWING IS FOR REFERENCE ONLY  
UNLESS SPECIFIED AS RELEASED.

APPROVALS

DRAWN JMC 06/04/2021

CHECK

ENGINEER

MANUFACTURING

CONTROL

APPROVED



TITLE  
DT SERIES

BLOWER MAX50-C060-C100

| SIZE | CAGE CODE | DWG NUMBER      | REV |
|------|-----------|-----------------|-----|
| A    | -         | MAX50-C060-C100 | 0   |

SHEET 1 OF 1

| REVISION HISTORY |             |      |
|------------------|-------------|------|
| REV              | DESCRIPTION | DATE |
|                  |             |      |

| DATE | APPROVED |
|------|----------|
|      |          |